



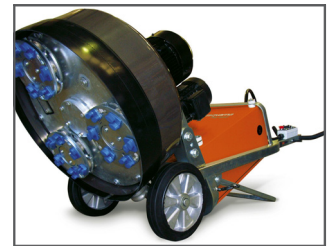
Husqvarna PG 530

The Husqvarna PG 530 is a planetary grinder available in both single and three phase versions with unmatched capacity, excellent for residential and light commercial purposes. The PG 530 combines the latest technology to deliver more power and performance than any other triple head planetary machine available in its class.



ERGONOMICALLY ADVANTAGEOUS

Low impact on operator's body when handling due to ergonomic frame and handle design.

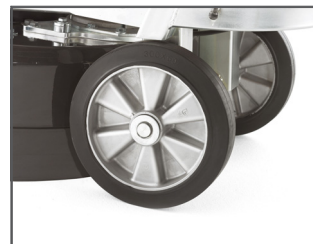


BEST IN CLASS

Best in class in terms of performance, reliability and longer machinery service life - before first service and between subsequent others.

TECHNICAL SPECIFICATION

Power output	3.73 kW
Rated current, A	16 A
Voltage	220 / 480 V
Phases	3
Grinding width	530 mm / 21"
Weight	215.46 kg / 475 lbs



SOLID HARD RUBBER WHEELS

Solid hard rubber wheels help the machine to deliver smoother cutting and polishing.



EASY TO USE CONTROL BOX

The control box is clearly marked and easy to use. Regulates and controls various functions on the machine.



HUSQVARNA CONSTRUCTION PRODUCTS

Polished Concrete Solutions 1625 Main Street
Sanford, ME 04073